

Product specification

M2M³

1. Scope

- Single outward opening doorsets
- Double outward opening doorsets
- Single inward opening doorsets
- Double inward opening doorsets

2. Sizing

All sizes shown are structural sizes in mm.

Variant	Min Height (mm)	Max Height (mm)	Min Width (mm)	Max Width (mm)
Single outward opening doorsets	1000	2930	600	1430
Double outward opening doorsets	1000	2930	900	2600
Single inward opening doorsets	1000	2930	600	1430
Double inward opening doorsets	1000	2930	900	2600

Note:

- Leaf and a half doorsets are available, with a minimum passive leaf width of 400mm.
- Outward opening removable top panel available.

3. Locking Options

- MICO Abryll panic escape, manual, automatic, and electromechanical deadlock single point locking
- MICO 942 2/3 point locking systems
- Double panic bar variant also available (panic bars fitted to both leaves of double doorsets)
- External access via MICO USCH cylinder guard with Scandinavian oval cylinders, as standard
- MICO ELK3 can be supplied for use with panic escape variants (available also to suit round or rim cylinders)
- Passive leaf fitted with heavy duty tower bolts, as standard, or secondary multipoint lock (tower bolts extended to a reachable height on larger doorsets)

4. Additional Options

- Vision panels (standard sizes in mm are 203x356, 203x762, 457x457)
- Punched and/or bladed louvre cartridges
- Range of stays and closers (M100 and TS83, as standard)
- Removable over panels
- Fixed side and/or over panels (successfully tested but awaiting final assessment from the LPCB)

5. Security Rating

M2M³ doors are LPCB certified to LPS 1175: Issue 7 Security Rating 3 (certificate number 312e).

Product specification

M2M³

6. Fire Rating

M2M³ doors are available with a fire rating up to FD240, providing integrity fire resistance for up to 240 minutes, certified by Exova under the CERTIFIRE scheme (certificate number CF5107).

Note:

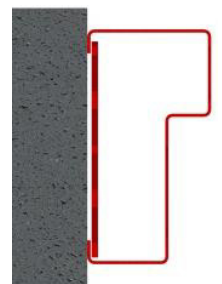
- 2/3 point locking systems are not fire rated.
- Doors fitted with removable over panels are not fire rated.
- Vision panels reduce the doorset's fire rating to FD60.
- Doors with louvres are not fire rated.

7. Leaf construction

Leaf Thickness	66mm
Leaf Material	Outerskins 1.5mm THK Zintec Internal plating to suit locking requirement Armoured steel, where required
Hinges	6no. hinges per leaf Choice of 126mm lift off hinges or grade 13 butt hinges Protected by 9no. hooked dog bolts per leaf
Astragal	10mm steel astragal
Lifting points	M10 lifting point per leaf

8. Frame Construction

Frame profile	110mm deep
Frame material	1.5mm THK Zintec
Construction method	Butt jointed frame sections, as standard Fully welded frame available at an extra cost
Reinforcing	3mm chassis system (no adjusters)
Threshold	Steel or aluminium available No still option available



Frame profile

9. Standard Details

Finish	Polyester powder coated, as standard Wood effect finish available at an extra cost
U'Value	No data available
Weight	Circa 75kg/m ²
Weight	Circa 75kg/m ²