

## THE CERTIFICATE OF APPROVAL VALIDATES AS FOLLOW:

Product	Fire rated pedestrian doorset
Reference of the product	M2M+ Single and double leaf metallic doorset
placed on the market by	<b>BRADBURY GROUP</b> 6 Atkinsons Way Foxhills Industrial Estate DN15 8QJ Scunthorpe United Kingdom
produced in the manufacturing plant located in	Scunthrope, United Kingdom

In compliance with the Efectis Certification Rules **DAP 21 REV. M**, this certificate of approval attests that:

- the doorset is submitted by the manufacturer to a factory production control,
- the accredited laboratory EFFECTIS France has performed the initial type-testing for the relevant characteristics of the doorset,
- the accredited inspection body EFFECTIS France has performed the initial inspection of the factory and of the factory production control and performs the continuous surveillance, assessment and approval of factory production control,
- the accredited inspection body EFFECTIS France has performed the assessment of the accompanying documents, in accordance to the level of certification no 2 defined in the Efectis Certification rules DAP 21.

	ASSOCIATED DOCUMENTS	INSPECTION REPORT	CERTIFICATE OF APPROVAL
Number:	Classification report: EFR-19-004699 Rev.9 Assessment of the accompanying documents: EFR-25-002454 Rev.2	EFR-25-000260A	<b>EFR-2506-0449</b>
Date of issue:	February 9 <sup>th</sup> 2026 March 2 <sup>nd</sup> 2026	July 16 <sup>th</sup> 2025	March 2 <sup>nd</sup> 2026
Date of 1 <sup>st</sup> issue:	-	-	June 19 <sup>th</sup> , 2025
Expiry date:	Valid as long as the product, the test standard and the production process are not modified	Valid up to the issuance of the surveillance inspection report (no later than the expiry date of the Certificate)	September 11 <sup>th</sup> , 2026

## DESCRIPTION OF THE DOORSET

Single or double leaf doorset with honeycomb cardboard core and with or without glazing.

The detailed description of the doorset and the associated hardware, approved by this certificate, is provided in the classification report referenced EFR-19-004699 Rev.9:

- Thickness of the leaf(ves): 45 mm
- Door frame in steel bended sheets 1.5 mm thick
- Options:
  - Threshold: DDA or LOW PROFILE (Bradbury) or AM3EX/ECO 3000 (Stormguard)
  - Vision panel: 5 mm thick FIRELITE or 12 mm thick FIRELITE SL or 6 mm thick PYRAN S
  - Intumescent fire block grille: 654 x 654 mm (FBLS)
  - Kick plate and push plate: steel or stainless steel sheet, 15/10 mm thick
  - Spy viewer: ZWS13 (Zero Seals)
  - Aluminium rain deflector: ERD 1.01.0130 (Exitex) or 141A (Zero Plus)
  - Silicone teardrop seal: with PSA self-adhesive backing (Zero Seals)



Accreditation n° 5-0540  
Scope available on  
[www.cofrac.fr](http://www.cofrac.fr)

- PCV perimeter seal: in the rebate of the doorframe (LAS1007 – Lorient)
- Steel cable loop: between the doorframe and the leaf (SDPL04)
- Door selector : in metallic pieces (Z304 – Zero Plus)
- Alarm contact: fixed on the rebate of the door (YA90-FR)

• Hardware:

	Characteristics	Reference
Hinges	Steel – 101 x 76 x 3 mm	AC0070 GRADE 13 (Arrone) 14888-SSS (Eclipse)
	Steel – 100 x 88 x 3 mm	H101 (Royde and Tucker) AR8782 (Arrone)
Closers	245 x 60 x 30 mm (l x w x th)	TS72 or TS83 (Dorma) DC300 or DC200 (Assa Abloy)
	281 x 65 x 47 mm	TS92 (Dorma) TS4000 (Geze)
Locking system Single-leaf doorset	7-points lock 8-points lock Sashlock  Mortice latch Lever-controlled lock  Mortise lock Electric latch	HOOPY (Bradbury) COMBAT (Bradbury) HD 72 UNION 5420.60.R.SS or 5520.60.R.SS (Briton) B3722 or 389N or 5220.57 or 379.N.SES (Briton) EL520 or EL522 or EL560 or EL561 or EL562 or EL563 (Assa Abloy) GBS92 (Eco Schulte) TRIMEC ES110 (Union)
Locking system Double-leaf doorset– active leaf	8-points lock Sashlock Lever-controlled lock  Mortise lock Electric latch	COMBAT (Bradbury) HD 72 UNION EL520 or EL522 or EL560 or EL561 or EL562 or EL563 (Assa Abloy) GBS92 (Eco Schulte) TRIMEC ES110 (Union)
Double-leaf doorset – passive leaf	Flush bolts Spring bolts	Z003R (Zero plus) A35 (Albert Jagger)
Emergency exit system Single-leaf doorset	Push bar Push pad	Briton 378 (Allegion) Briton 1438 (Allegion)
Emergency exit system Double-leaf doorset– active leaf	Push bar Push pad	Briton 378 (Allegion) Briton 1438 (Allegion)
Double-leaf doorset– passive leaf	Push pad	Briton 376 (Allegion)

## FIRE RESISTANCE CLASSIFICATION

Details of the applicable conditions described in the classification report EFR-19-004699 rev.9:

### Single-leaf doorset

- Indifferent fire side (regarding the permissible dimension variations of the leaf described below):

E	t
E	240 (*)

- Indifferent fire side (regarding the permissible dimension variations of the leaf described below):

E	t
E	90 (*)

- Indifferent fire side (regarding the permissible dimension variations of the leaf described below) – Door with locks B3722 or 389N or 5220.57 or 379.N.SES :

E	t
E	120 (*)

- Indifferent fire side (regarding the permissible dimension variations of the leaf described below) – Door with emergency exit push bar BRITON 378 or emergency exit push pad BRITON 1438 :

E	t
E	240 (*)

**Double-leaf doorset**

- Indifferent fire side (regarding the permissible dimension variations of the leaf described below):

E	t
E	240 (*)

**Single- or double-leaf doorset**

- Indifferent fire side – Door with closer TS92:

E	t
E	90 (*)

- Indifferent fire side – Door installed into flexible supporting construction:

E	t
E	90 (*)

- Indifferent fire side – Door with lock GBS92 or door with closer TS4000:

E	t
E	60

- Indifferent fire side – Door with electric latch TRIMEC ES110 :

E	t
E	90

- Indifferent fire side – Door with PVC perimeter seal LAS1007 added in the rebate of the doorframe:

E	t
E	30

- Indifferent fire side – Door with steel cable loop SDPL04 or with glazing PYRAN S:

E	t
E	180

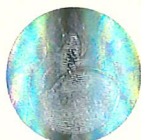
(\*) : the E 60 classification is validated for single and double-leaf doors, with all the hardware (hinges, locks) and support constructions validated in the classification report EFR-19-004699 rev.9-RC, and for all authorized dimensions described below.

**PERMISSIBLE DIMENSIONS VARIATIONS OF LEAF**

**Single-leaf doorset**

- Fire to the hinges side – Performance E 240:

	Width (mm)	Height (mm)
Minimal	Unlimited	Unlimited
Maximal	1091	2570
Leaf area ≤ 2.43 m <sup>2</sup>		



- Fire opposite to the hinges side – Performance E 240:

	Width (mm)	Height (mm)
Minimal	Unlimited	Unlimited
Maximal	1320	2822
Leaf area ≤ 3.38 m <sup>2</sup>		

- Indifferent fire side – Performance E 90 maximum:

	Width (mm)	Height (mm)
Minimal	Unlimited	Unlimited
Maximal	1148	2454

- Indifferent fire side for a single leaf equipped with a lock of reference 5420.60.R.SS or 5520.60.R.SS or B3722 or 389N or 5220.57 or 379.N.SES (BRITON):

	Width (mm)	Height (mm)
Minimal	Unlimited	Unlimited
Maximal	1064	2346
Leaf area ≤ 2.26 m <sup>2</sup>		

### Double-leaf doorset

- Indifferent fire side:

		Minimal	Maximal
Active leaf	Width (mm)	Unlimited	1154
	Height (mm)	Unlimited	2454
Passive leaf	Width (mm)	Unlimited	1150
	Height (mm)	Unlimited	2454

### **AUTHORISED SUPPORTING CONSTRUCTION**

Rigid supporting construction according to EN 1363-1 (reinforced concrete wall, blockwork, masonry or homogenous concrete wall):

density ≥ 2200 kg/m<sup>3</sup>  
thickness ≥ 175 mm

Flexible supporting construction according to EN 1363-1: for E90 doors only.

### **INSTALLATION & MAINTENANCE**

#### **Installation instructions:**

- Document referenced IMSD057 – issue 5 : « M2M + FD Fitting Instructions »

#### **Maintenance manual:**

- Document referenced IMSD057 – issue 5 : « M2M + FD Fitting Instructions »

Signed by delegation of the Technical Certification Director,

Yannick LE TALLEC  
Certification Director

*The above certificate is valid only when the product is installed in accordance with the 'product application guideline' (End use). To verify the validity of the product, logon to our website [www.efectis.com](http://www.efectis.com) and type in the COMPLIANCE CERTIFICATE NUMBER.*