

## THE CERTIFICATE OF APPROVAL VALIDATES AS FOLLOW:

Product	<b>Fire rated pedestrian doorset</b>
Reference of the product	<b>M2M 2/3/4</b>
placed on the market by	<b>BRADBURY GROUP</b> 6 Atkinsons Way Foxhills Industrial Estate DN15 8QJ Scunthorpe United Kingdom
produced in the manufacturing plant located in	<b>Scunthorpe, United Kingdom</b>

In compliance with the Efectis Certification Rules **DAP 21 REV. M**, this certificate of approval attests that:

- the doorset is submitted by the manufacturer to a factory production control,
- the accredited laboratory EFFECTIS France has performed the initial type-testing for the relevant characteristics of the doorset,
- the accredited inspection body EFFECTIS France has performed the initial inspection of the factory and of the factory production control and performs the continuous surveillance, assessment and approval of factory production control,
- the accredited inspection body EFFECTIS France has performed the assessment of the accompanying documents, in accordance to the level of certification no 2 defined in the Efectis Certification rules DAP 21.

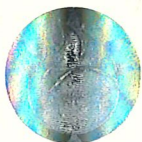
	<b>ASSOCIATED DOCUMENTS</b>	<b>INSPECTION REPORT</b>	<b>CERTIFICATE OF APPROVAL</b>
<i>Number:</i>	Classification report: EFR-21-001176 Rev.5 Assessment of the accompanying documents: EFR-25-002454 Rev.2	EFR-25-000260A	<b>EFR-2506-0450</b>
<i>Date of issue:</i>	February 18 <sup>th</sup> , 2026 March 2 <sup>nd</sup> 2026	July 16 <sup>th</sup> 2025	March 2 <sup>nd</sup> 2026
<i>Date of 1<sup>st</sup> issue:</i>	-	-	June 19 <sup>th</sup> 2025
<i>Expiry date:</i>	Valid as long as the product, the test standard and the production process are not modified	Valid up to the issuance of the surveillance inspection report (no later than the expiry date of the Certificate)	September 11 <sup>th</sup> 2026

## DESCRIPTION OF THE DOORSET

Single or double leaf doorset with mineral wool core.

The detailed description of the doorset and the associated hardware, approved by this certificate, is provided in the classification report referenced EFR-21-001176 Rev.5:

- Thickness of the leaf(ves): 66 mm
- Door frame in steel profiles 1.5 to 2 mm thick
- Options:
  - Threshold: in aluminium or steel
  - Cable chanel: SPDL03 (SSP)
  - Kick plate and push plate: steel or stainless steel sheet, 15/10 mm thick
  - Silicone teardrop seal: with PSA self-adhesive backing (Zero Seals)
  - PCV perimeter seal: in the rebate of the doorframe (LAS1007 – Lorient)
  - Door viewer: Ø 15 mm maximum
  - Aluminium rain deflector: ERD 1.01.0130 (Exitex) or 141A (Zero Plus)
  - Door selector: in metallic pieces (Z304 – Zero Plus)



Accreditation n° 5-0540  
Scope available on  
[www.cofrac.fr](http://www.cofrac.fr)

- Alarm contact: fixed on the rebate of the door (YA90-FR)
- Threshold

• Hardware:

	Characteristics	Reference
Hinges	Stainless steel: 125 x 93 mm 125 x 23 mm	H126 (Royde and Tucker) H126 HI LOAD (Royde and Tucker)
	Steel: 100 x 88 x 3 mm	H101 (Royde and Tucker) AR8782 (Arrone)
Closers	245 x 60 x 46 mm (l x w x th)	TS83 (Dorma) DC300 or DC200 (Assa Abloy)
Locking system Single doorset & Double-leaf doorset – active leaf	Stainless steel: 138 x 186 x 40 mm (w x h x d) 235 x 265 x 40 mm (w x h x d)	ELITE (Mico) ABRYLL (Mico) : <ul style="list-style-type: none"> <li>• EM3 or EM1 STATE or EM2 STATE or EM3 STATE</li> <li>• MD3 or MD1 STATE or MD2 STATE or MD3 STATE</li> <li>• AD3 or AD1 STATE or AD2 STATE or AD3 STATE</li> <li>• PE3 or PE1 or PE2</li> </ul>
Double-leaf doorset – passive leaf	2-points lock Tower bolts	942 (Mico) MSTB/HSTB (Mico)
Panic device	Panic bar	SAFETY (Mico)

**FIRE RESISTANCE CLASSIFICATION**

Details of the applicable conditions described in the classification report EFR-21-001176 rev.5:

**Single-leaf doorset**

- Fire on the hinge side:

E	t
E	120

- Fire opposite to hinge side:

E	t
E	240

**Double-leaf doorset**

- Indifferent fire side – Door without locking system EM3 or EM1 STATE or EM2 STATE or EM3 STATE:

E	t
E	120

- Indifferent fire side – Door with locking system EM3 or EM1 STATE or EM2 STATE or EM3 STATE:

E	t
E	30

## PERMISSIBLE DIMENSION VARIATIONS OF LEAF

### Single-leaf doorset

	Width (mm)	Height (mm)
Minimal	Unlimited	Unlimited
Maximal	1 294	2813
Leaf area ≤ 3.30 m <sup>2</sup>		

### Double-leaf doorset

- Fire opposite to hinge side:

		Minimal	Maximal	Maximal leaf area
Active leaf	Width (mm)	Unlimited	1258.5	3.21 m <sup>2</sup>
	Height (mm)	Unlimited	2813.5	
Passive leaf	Width (mm)	Unlimited	1213.47	3.09 m <sup>2</sup>
	Height (mm)	Unlimited	2813.5	

For unequal leaves, the authorized overall widths are:

- Width of active leaf: ≥ 547.2 mm
- Width of passive leaf: ≥ 527.7 mm

- Fire on hinge side or indifferent fire side:

		Minimal	Maximal
Active leaf	Width (mm)	Unlimited	1094.4
	Height (mm)	Unlimited	2446.5
Passive leaf	Width (mm)	Unlimited	1055.4
	Height (mm)	Unlimited	2446.5

For unequal leaves, the authorized overall widths are:

- Width of active leaf: ≥ 547.2 mm
- Width of passive leaf: ≥ 527.7 mm

## AUTHORISED SUPPORTING CONSTRUCTION

Rigid supporting construction according to EN 1363-1 (reinforced concrete wall, blockwork, masonry or homogenous concrete wall):

density ≥ 2200 kg/m<sup>3</sup>  
thickness ≥ 110 mm.

## INSTALLATION & MAINTENANCE

### Installation instructions:

- Document referenced IMSD055 – issue 5 : « M2M 2\_3\_4 FD Fitting Instructions »

### Maintenance manual:

- Document referenced IMSD055 – issue 5 : « M2M 2\_3\_4 FD Fitting Instructions »

Signed by delegation of the Technical Certification Director,

Yannick LE TALLEC  
Certification Director

*The above certificate is valid only when the product is installed in accordance with the 'product application guideline' (End use). To verify the validity of the product, logon to our website [www.efectis.com](http://www.efectis.com) and type in the COMPLIANCE CERTIFICATE NUMBER.*



Accreditation n° 5-0540  
Scope available on  
[www.cofrac.fr](http://www.cofrac.fr)